

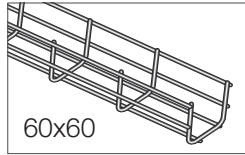
X-TRAY®

AXELENT WIRE TRAY

Mounting instructions X-Tray® for X-Guard

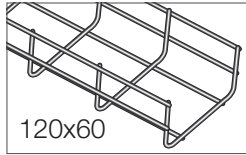


Standard Trays 60



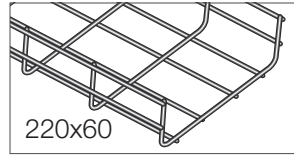
60x60

0101



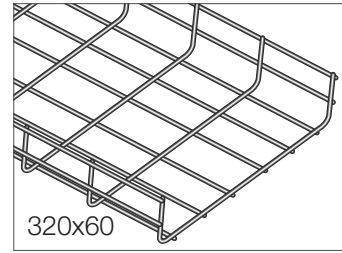
120x60

0111



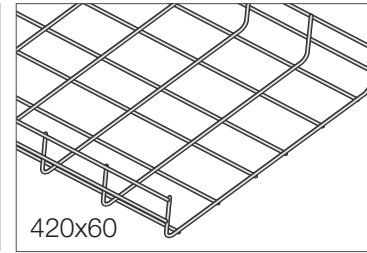
220x60

0121



320x60

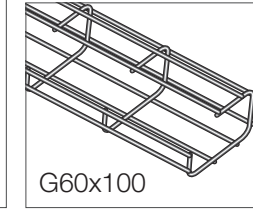
0131



420x60

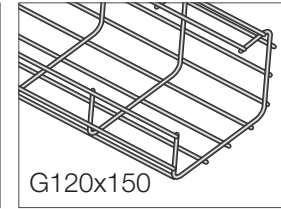
0141

G-Trays



G60x100

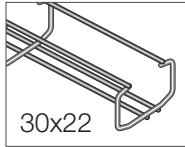
1121



G120x150

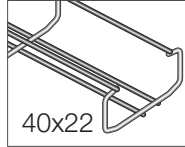
1122

Mini Trays



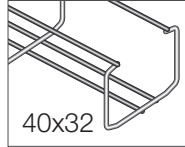
30x22

1152



40x22

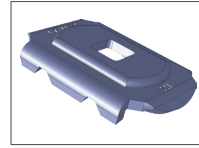
1153



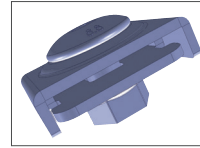
40x32

1154

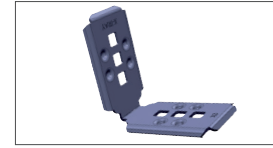
Fittings



X1 Fitting
2101



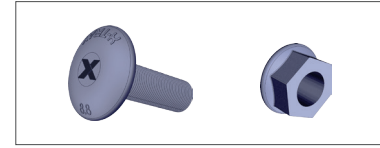
X2 Fitting
2102



X3 Angled fitting
2103



X4 Fitting
2104



X61 Bolt
2161

X62 Flange nut
2162

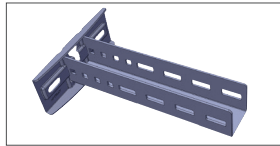
Brackets



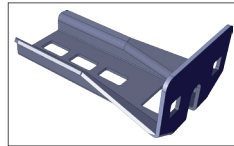
X10 Bracket
2110-1



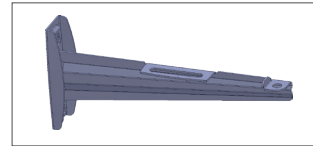
X10 Mini bracket
2110-2



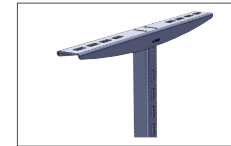
X11 Pendant/T
2111-240



X14 Pendant/L
2114-XXX*



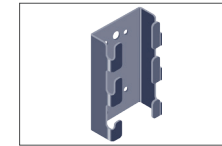
X15 Bracket
2115-XXX*



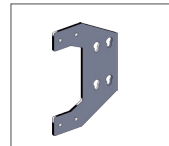
X16 Floor support
2116



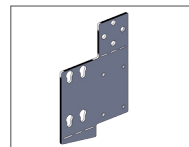
Bracket AX12 90°
7100-015



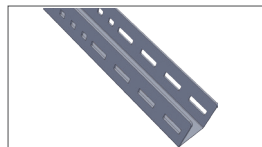
Bracket AX11 with
pegs 7100-014



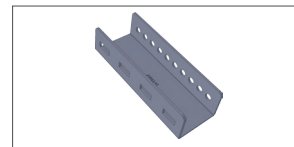
Corner bracket
7100-065



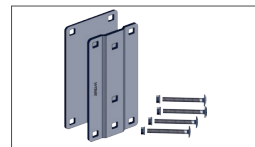
Top corner bracket
7100-066



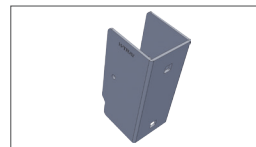
U-profile
01-2112-240



Bracket holder aluminium
rail 7100-037



Adjustable post holder
7100-060



Bracket holder door
7100-067 / 7100-068

Verktyg

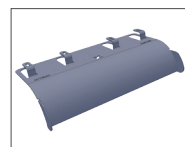


X75 Bolt cutter
2575

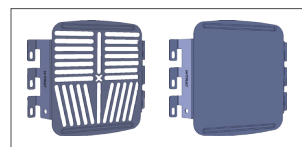


X76 Spanner 13 mm
2576

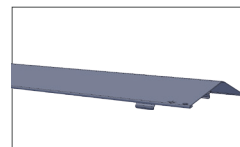
Tillbehör



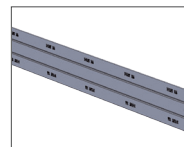
X60 Radius
limiter
2160-XXX*



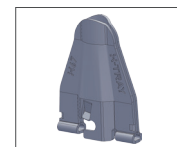
X63 Accessories holder
2163-1 / 2163-2



X65 X-Tray cover
2265-XXX*



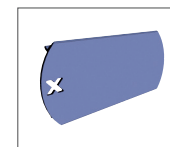
X66 X-Tray
divider 45 mm
2266-45



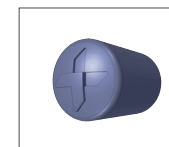
X67 X-Tray
divider clamp
2267



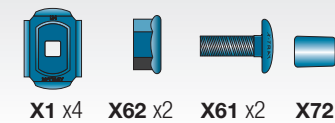
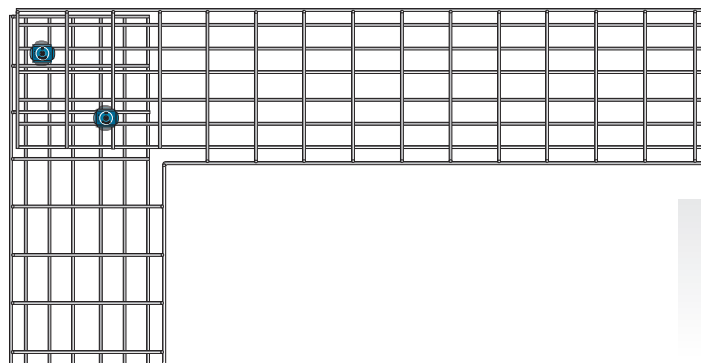
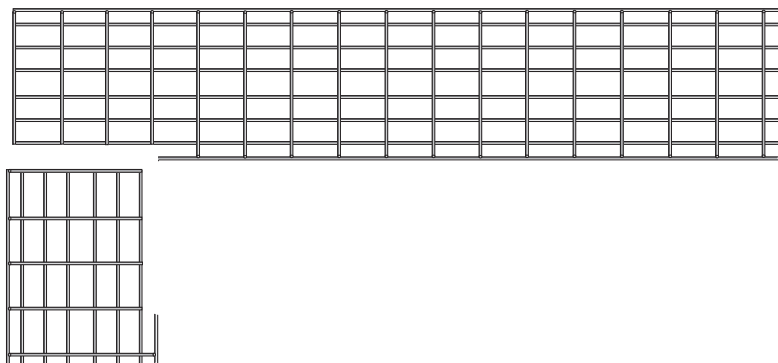
X68 Earth
connection clamp
2568



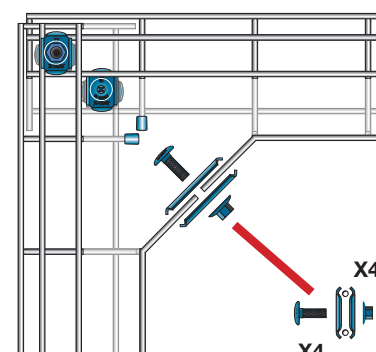
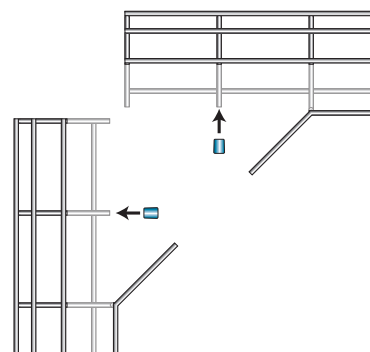
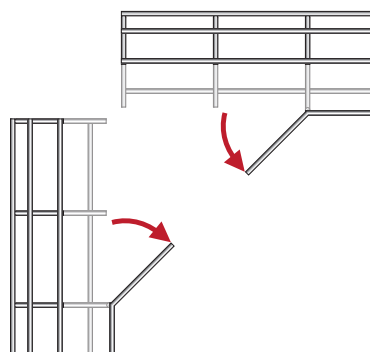
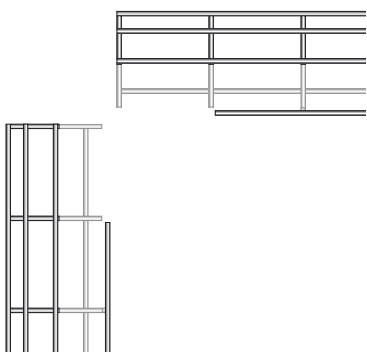
X70 Marking
clip
2570-0X



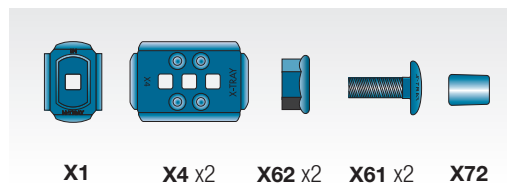
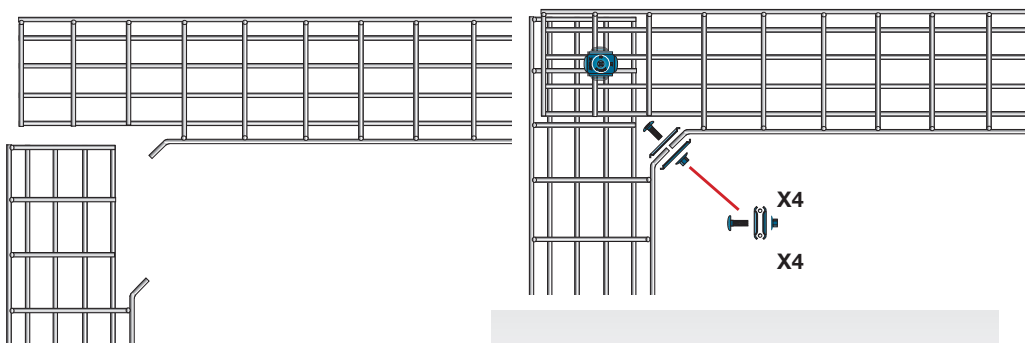
X72 Safety cap
2572-X

A

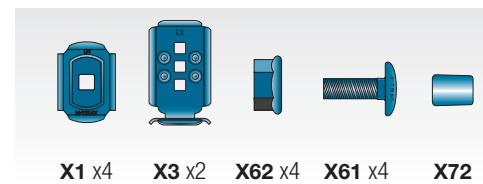
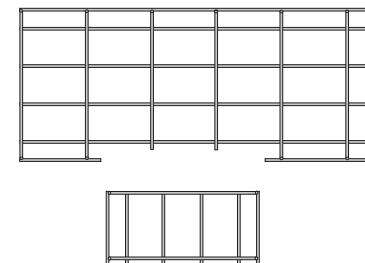
X1 x4 X62 x2 X61 x2 X72

B

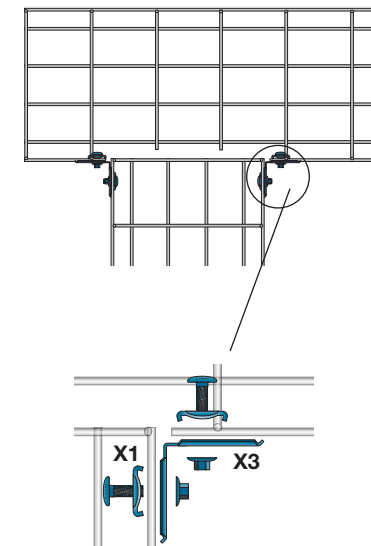
X1 x4 X4 x2 X62 x3 X61 x3 X72 x2

C

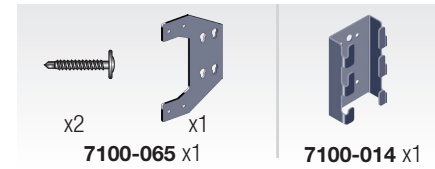
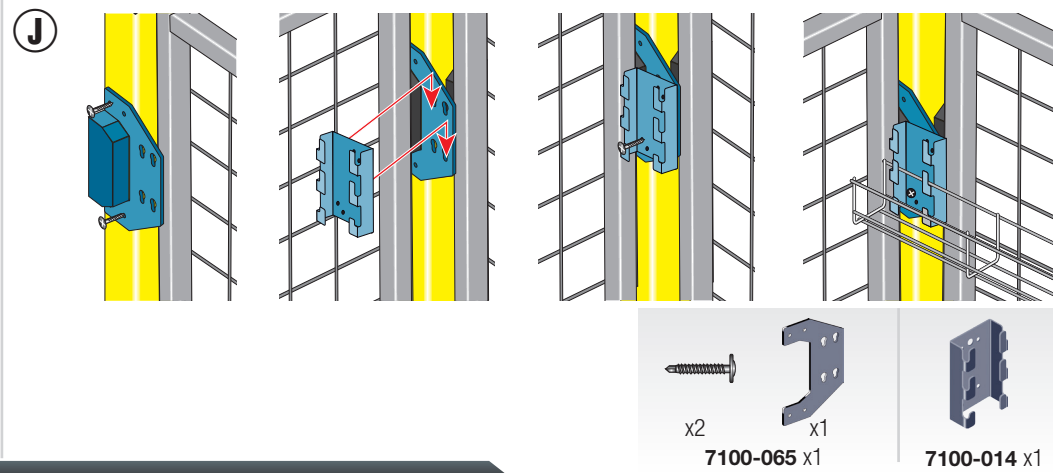
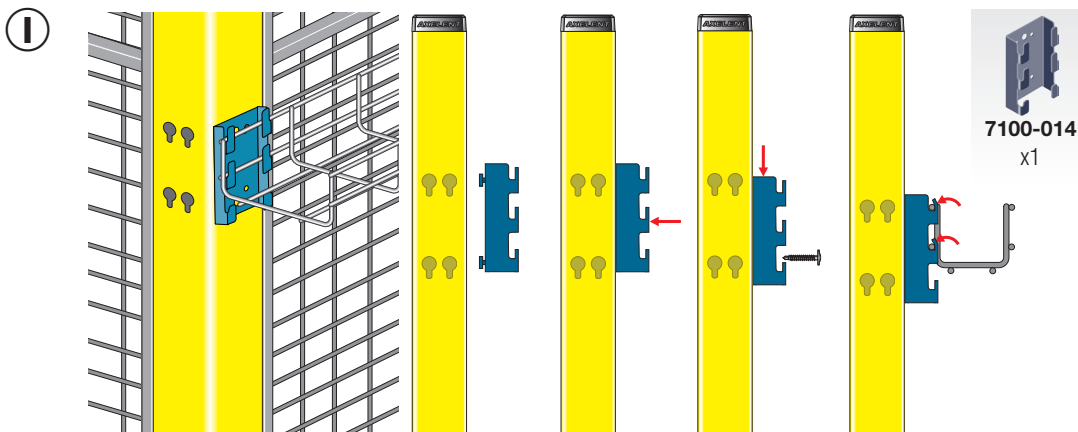
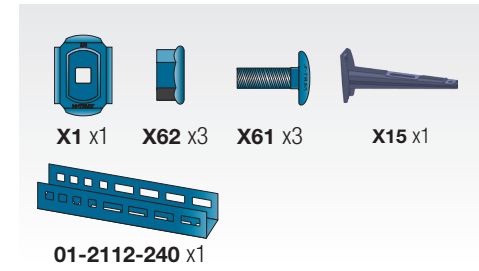
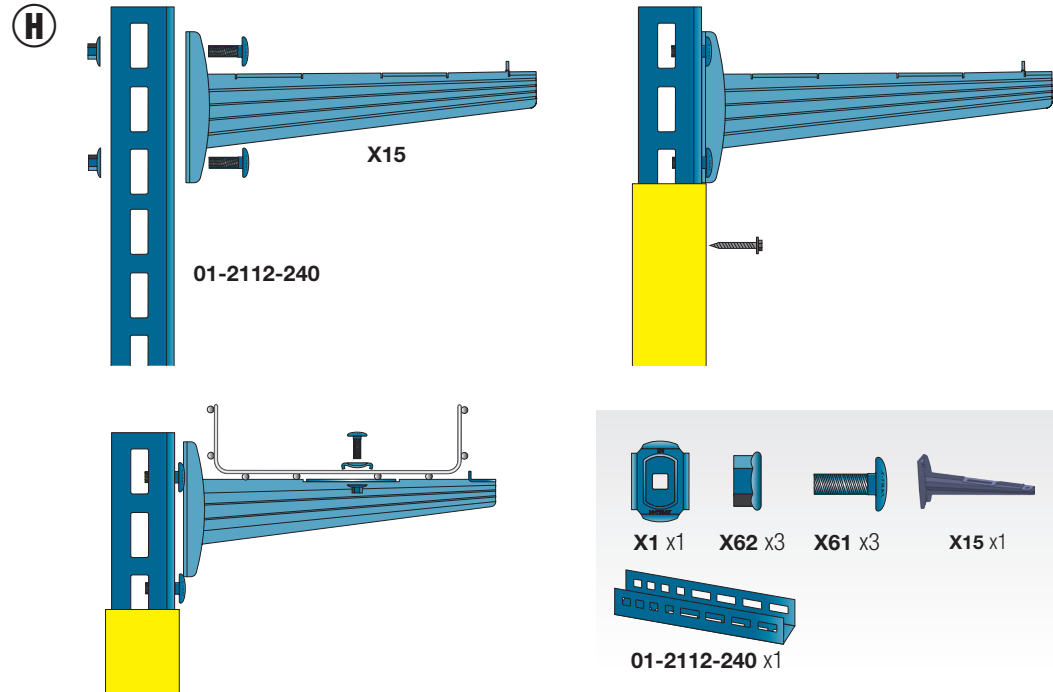
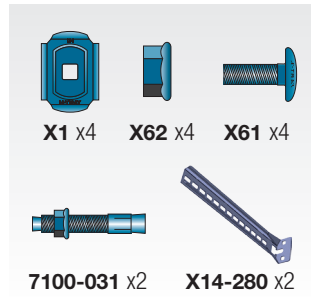
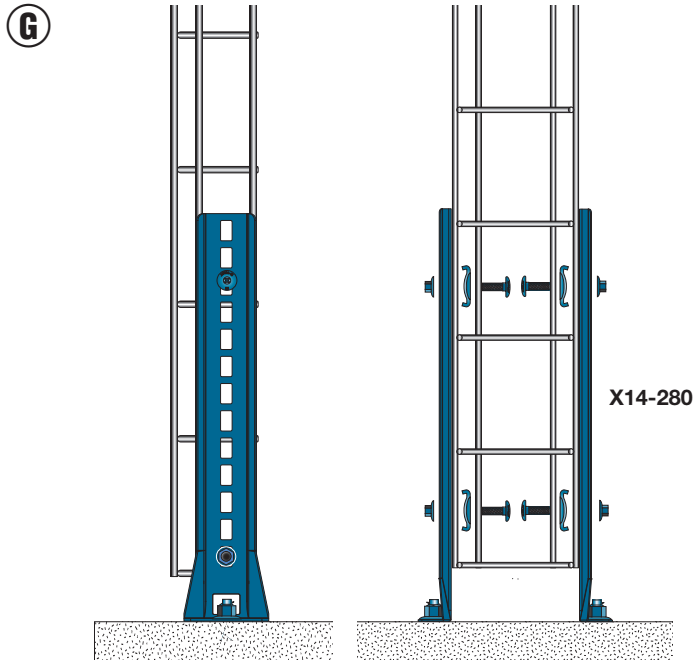
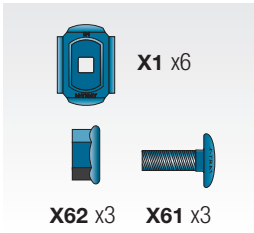
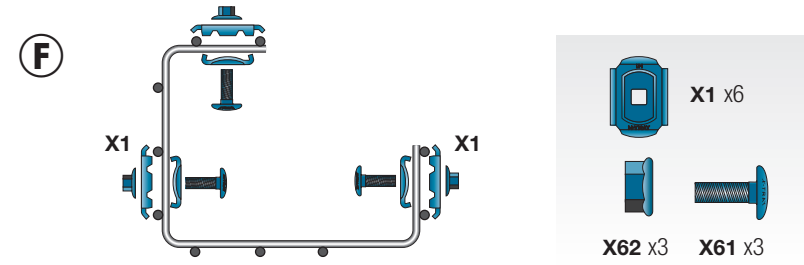
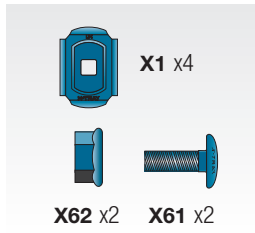
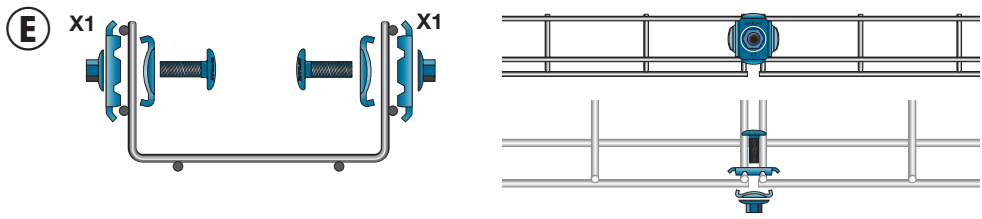
X1 X4 x2 X62 x2 X61 x2 X72

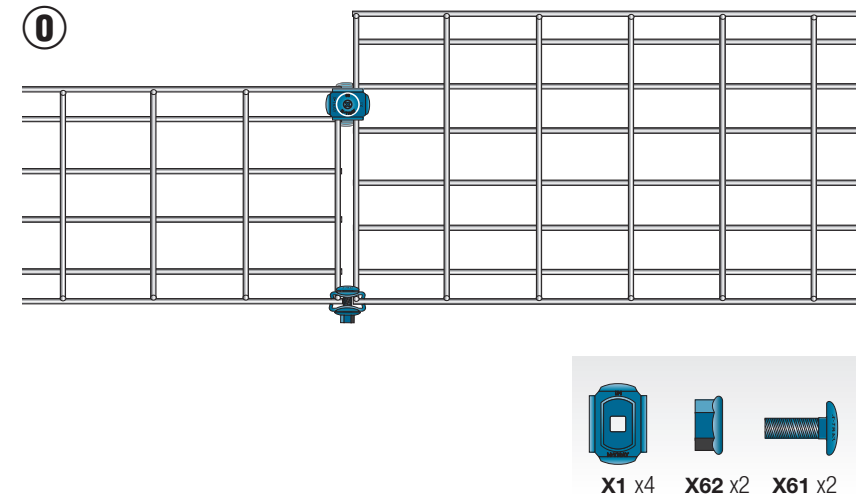
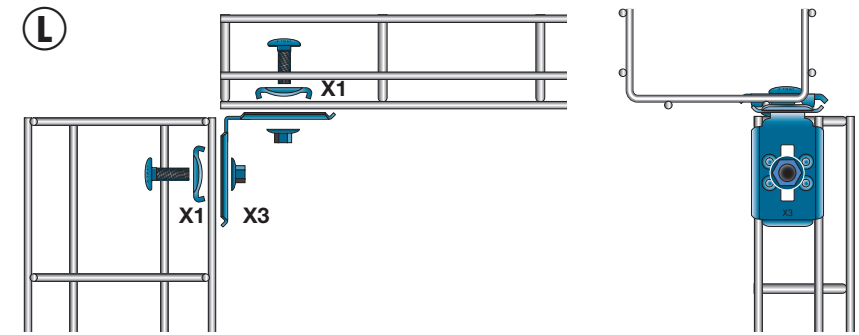
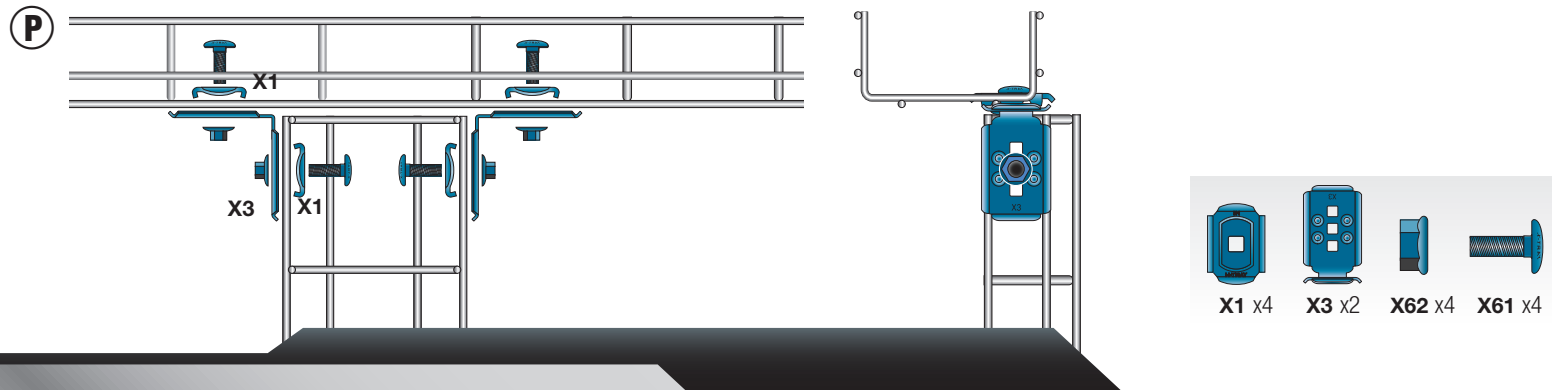
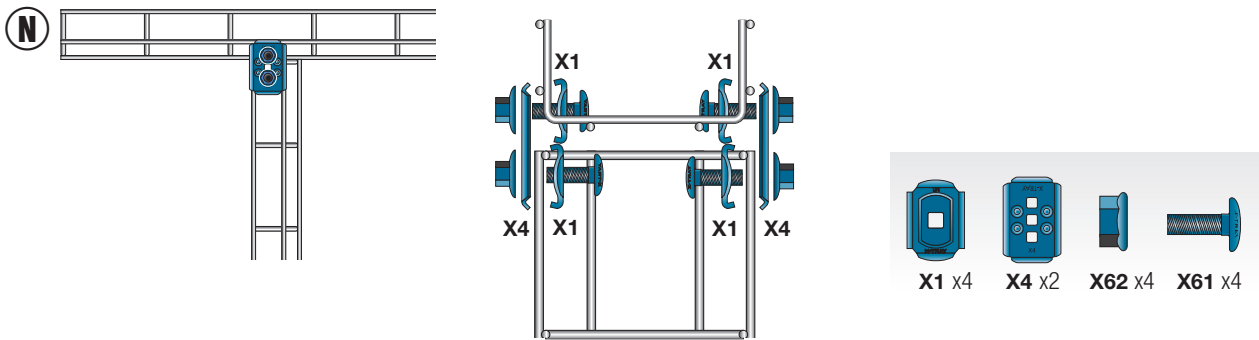
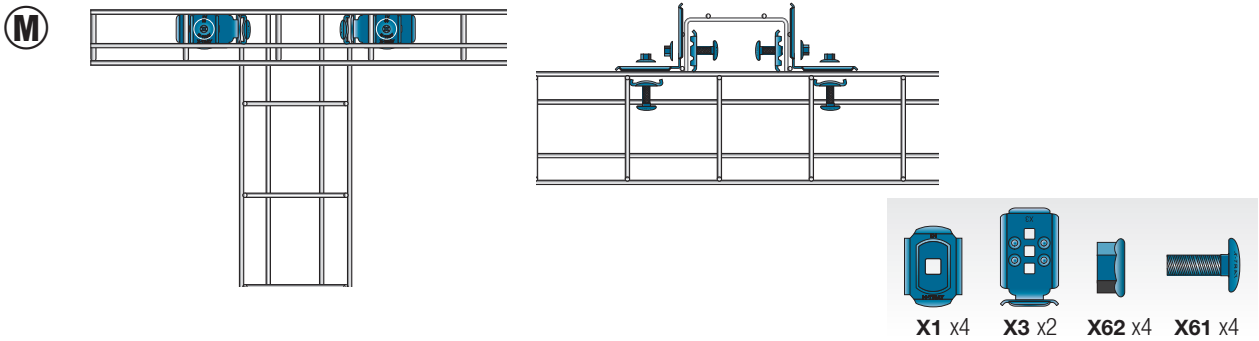
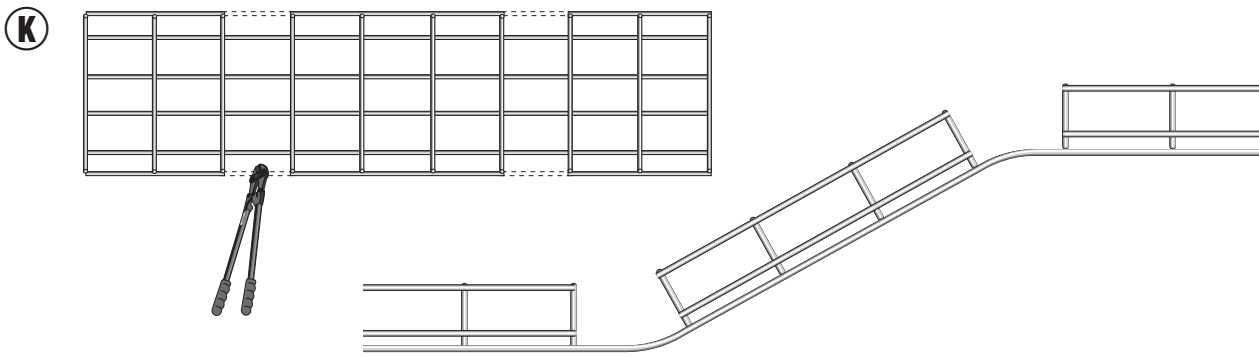
D

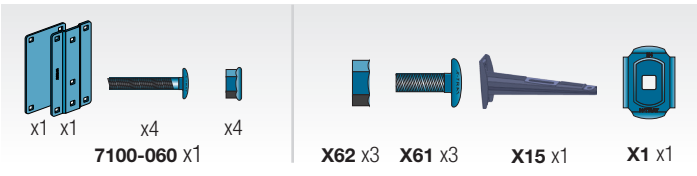
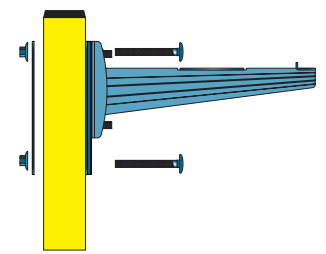
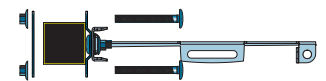
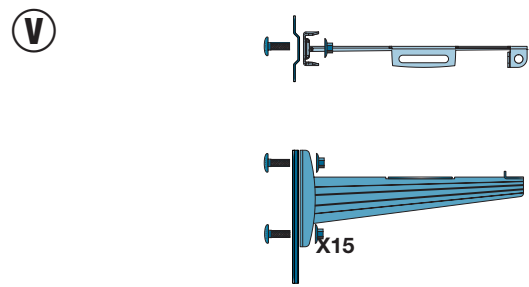
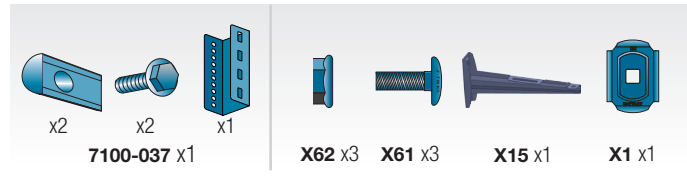
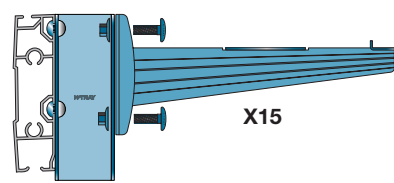
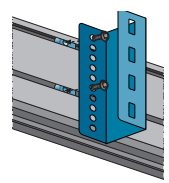
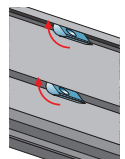
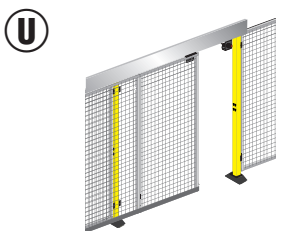
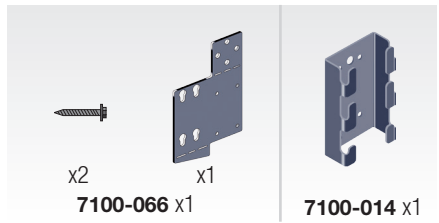
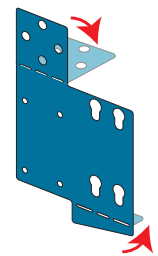
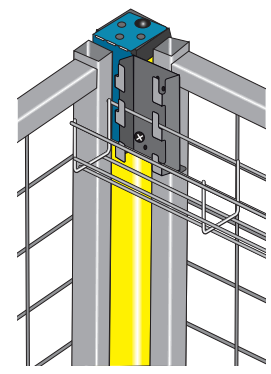
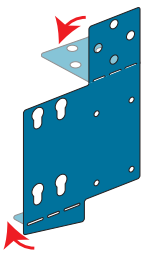
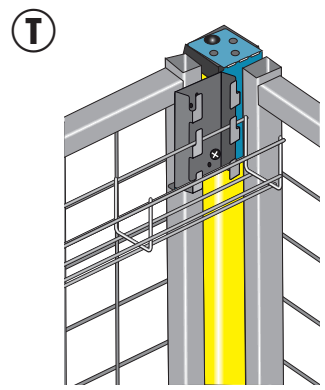
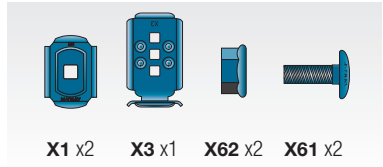
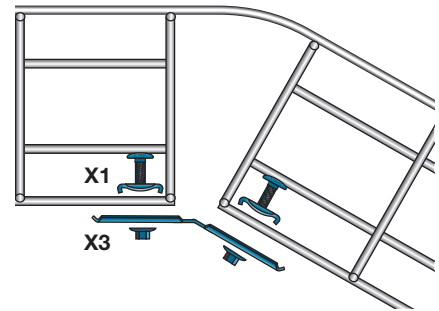
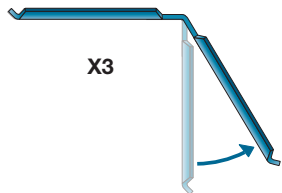
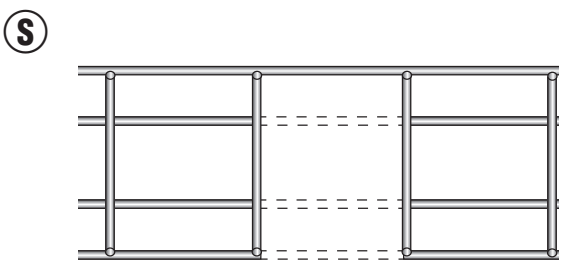
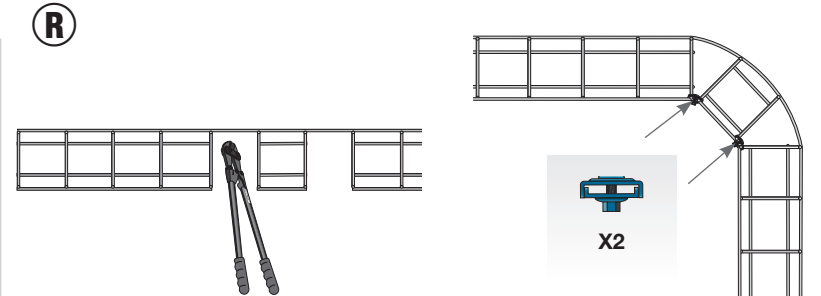
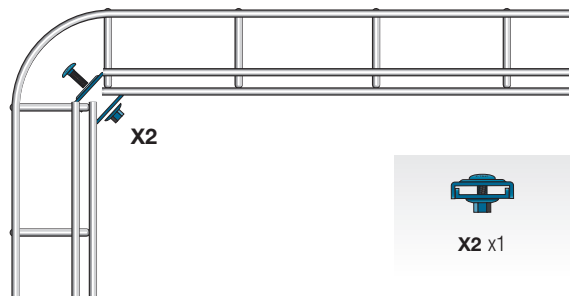
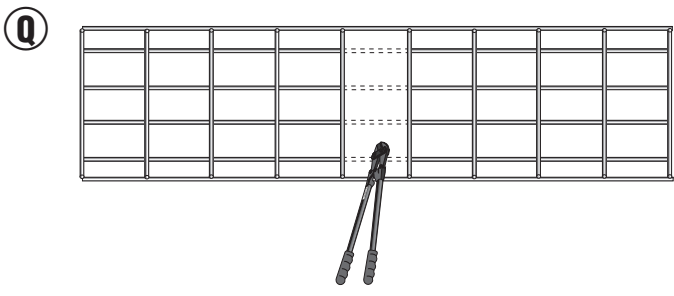
X1 x4 X3 x2 X62 x4 X61 x4 X72

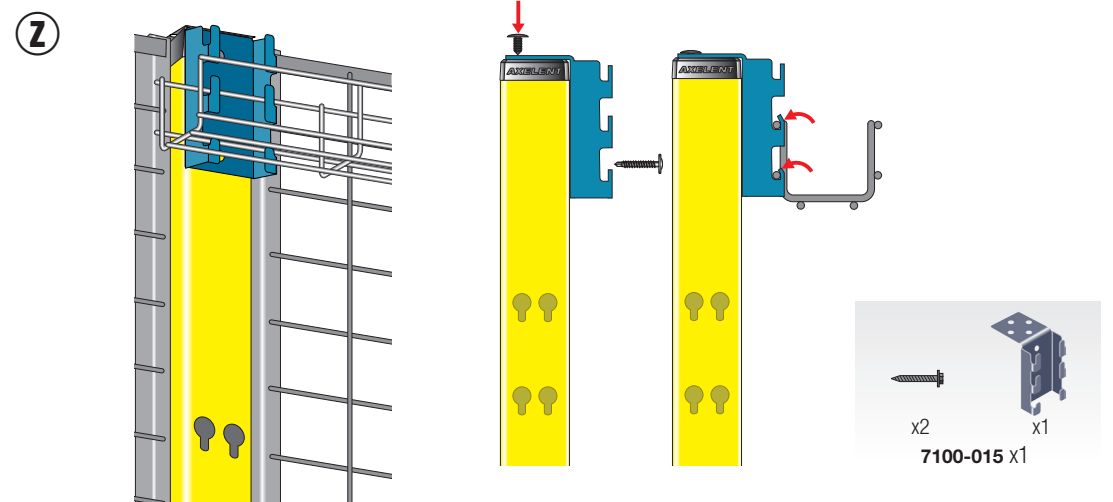
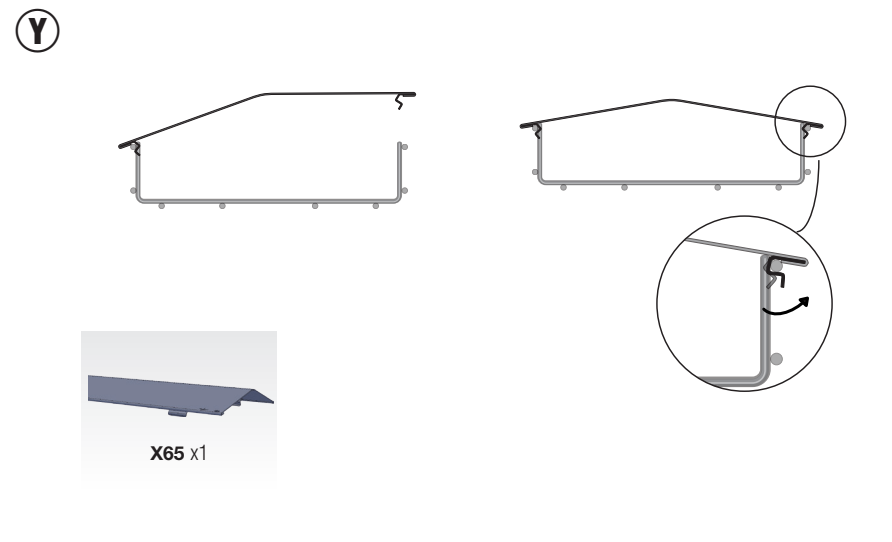
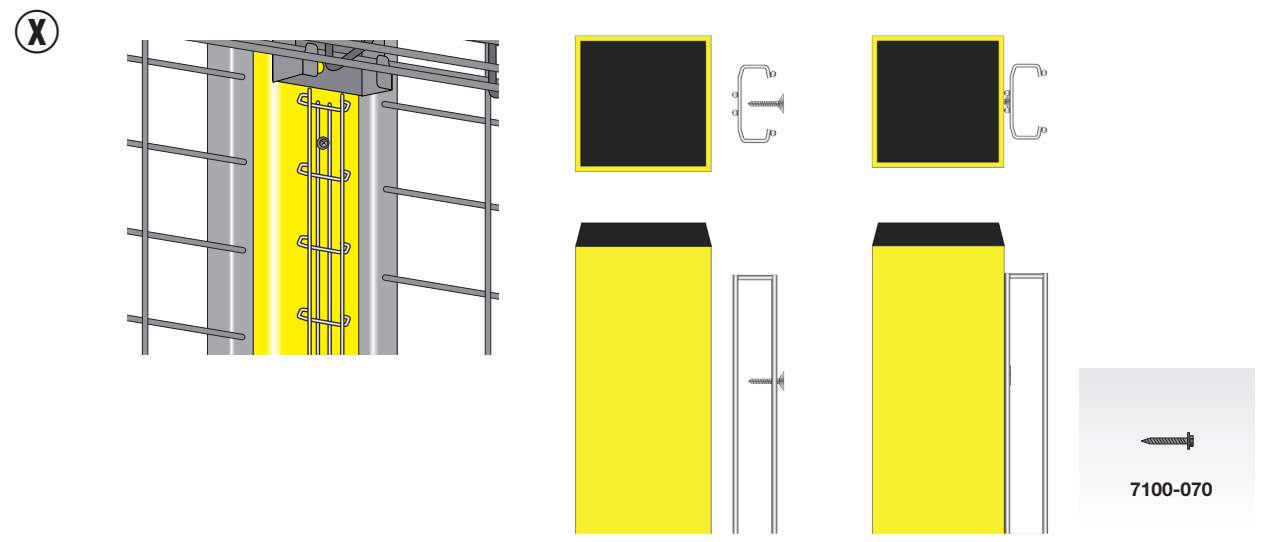
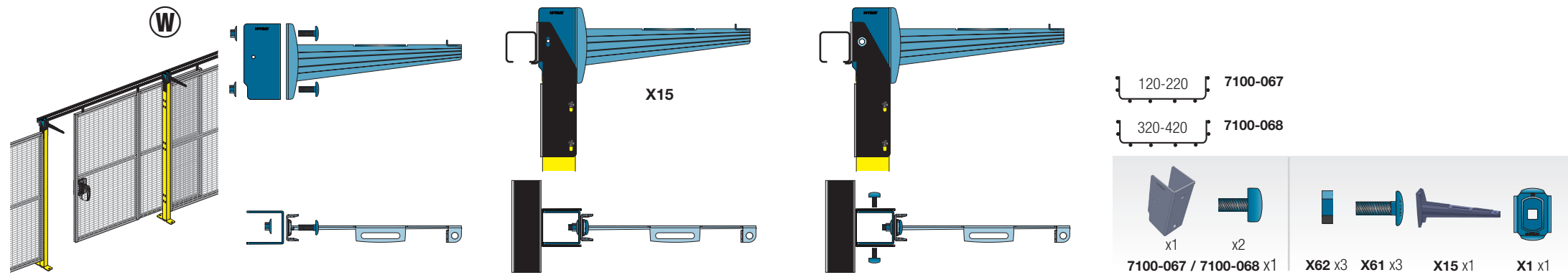


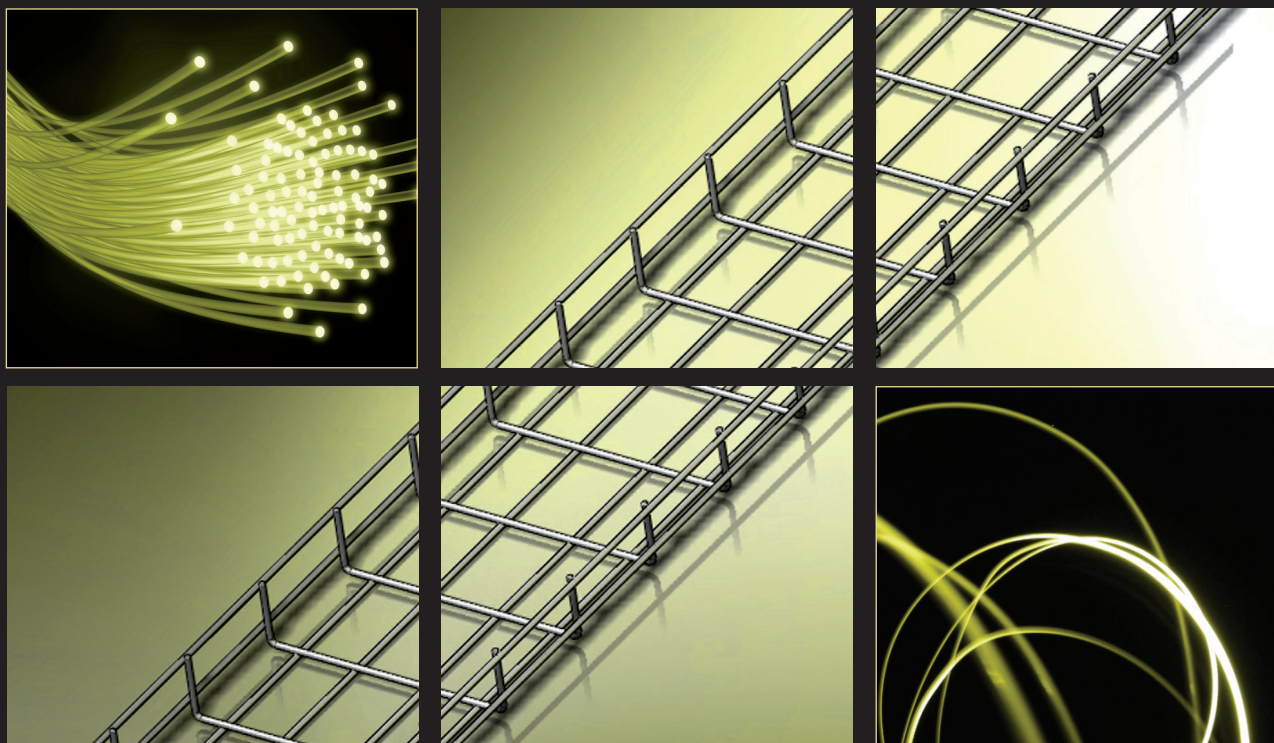
* For more info about cutting the wire tray, see our technical manual.











AXELENT WIRE TRAY AB

Axelent AB is a leading and rapidly growing company that produces and sells mesh panel systems for machine guarding and partitioning within industry, warehousing and property protection. Axelent AB also embraces business area Axelent Safety, which offers complete machine safety solutions. The Axelent Group also includes Axelent Wire Tray AB (cable trays), Axelent Software (software) and Axelent Engineering AB (automation solutions). Axelent's head office is in Hillerstorp, Sweden, along with product development, production, storage and packaging. Axelent has sales offices in over 50 countries and the products are sold worldwide.



AXELENT WIRE TRAY AB

Box 1 · Kävsjövägen 17

SE-330 33 Hillerstorp

Direct: +46 (0)370 37 32 58

Tel: +46 (0)370 37 37 30

E-mail: sales@axelentwt.com

Internet: www.axelentwt.se